

# Radio Controlled

Solar Powered Airfield Lighting

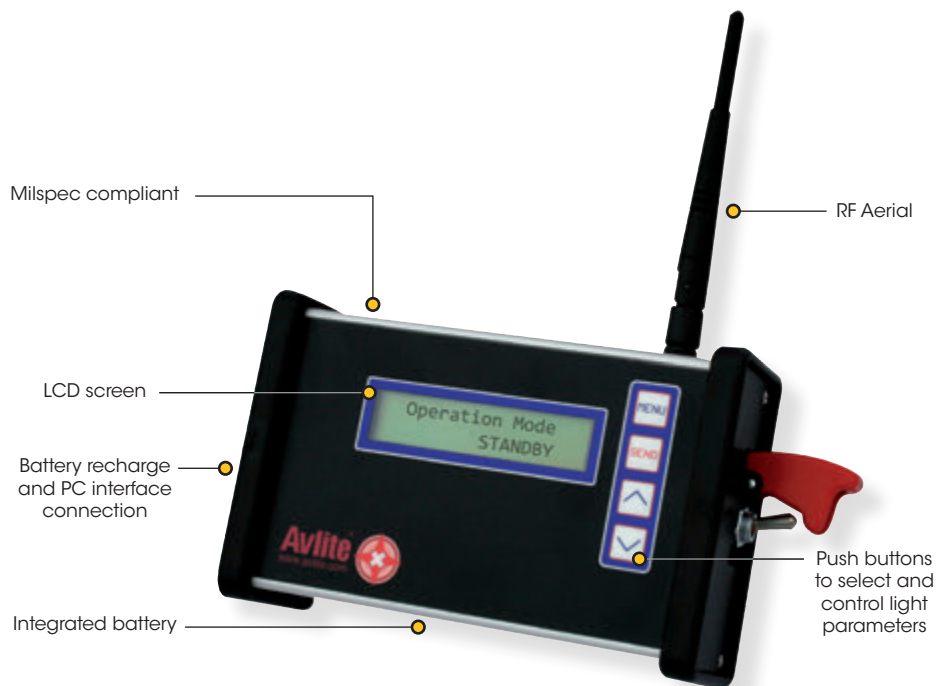


## Features

- 2.4GHz worldwide accepted radio control
- 128bit security encryption
- SHUT DOWN or turn all lights 'ON' remotely within seconds
- Allocate lights into 'light groups', and remotely control each group
- Set units to synchronized flashing

## Compliance

- FCC Approved, M100103



**The Avlite Systems radio controlled airport lighting platform is designed to offer airports, defence, and aid agencies complete flexibility and enormous advantages over traditional airport fixtures.**

The system is operated by a wireless handheld controller, which enables personnel to remotely activate and set specific characteristics of lights within their airfield.

Lights can be allocated to up to 15 'groups', such as taxiways, runway edge or threshold, and each group can be controlled independently.

The operator can switch between visible and IR for each light in the group remotely by selecting between internal LED light banks - greatly expanding the flexibility of the system. For defence applications, models can be supplied with the ability to remotely switch between visual and infrared light output.

In addition to switching between operating colours, lights can be set to any of over 256 flash patterns, including MORSE CODE. Lights set to the same flash rate will automatically synchronize with each other to provide clear perimeter or security marking.

Using advanced proprietary software, the airfield lighting system has a large operational range. The operating range of the hand-held controller is up to 1.4km - after which one of the lights in range will relay the message to other lights in the network.

Avlite Systems is a world leader in the production of solar powered LED airfield lighting systems, deployed throughout some of the most demanding regions by customers including the US Army and US Air Force.

The 2.4GHz wireless network platform is designed to allow the operator to control a wide range of Avlite products on the airfield, including taxiways, runways, barricades, obstruction, sign lighting, and area lighting - all with a single handheld controller.



# Radio Controlled

Solar Powered Airfield Lighting



Handheld controller and charger in protective case

## Wireless Handheld Controller

The handheld wireless controller enables personnel to remotely activate and set specific characteristics of lights within their airfield, via 128-bit encrypted RF data.

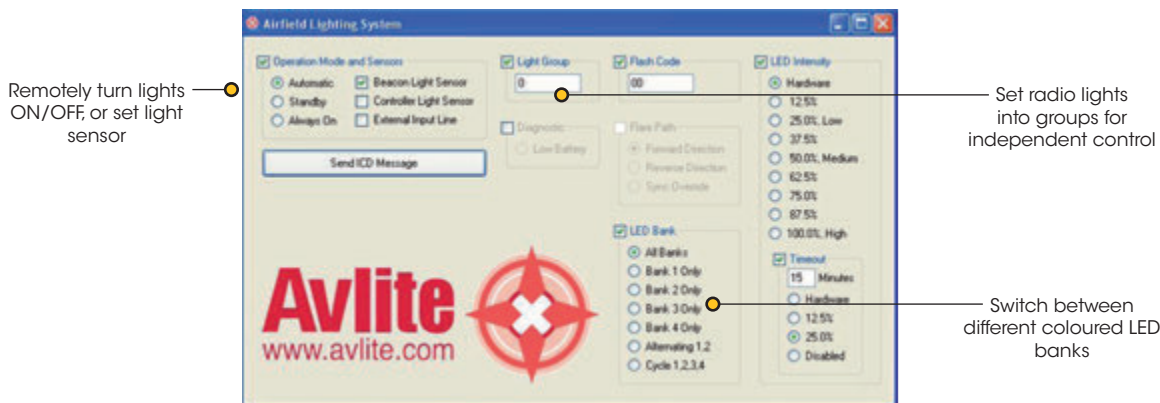
Lights may be designated into up to 15 independent groups, and then configured to specify individual light profiles such as light flash code, intensity and colour (LED banks). In addition the lights may be manually activated via the controller, or set to automatically begin operation via the internal light sensor. The straight-forward menu makes the radio-controlled airfield lighting system very easy to operate.

The lightweight unit has an operational range of up to 1.4km, and features a heavy-duty aluminium housing, LCD screen, RF aerial and 4 push buttons for parameter control. An IP67 rated charging plug enables ease of battery recharge.

## Optional PC Interface

In addition to all the features available via the wireless handheld controller, users may access their airfield lights via PC interface. All system features available from the handheld wireless controller are available from the interface, for ease of use and accessibility.

Avlite Systems PC Interface Command Centre allows the user the ability to control the entire airfield without leaving their desk. Lights can be controlled as easily as selecting one of the many settings and pressing the Send ICD Message button.



Remotely turn lights ON/OFF, or set light sensor

Set radio lights into groups for independent control

Switch between different coloured LED banks

The Avlite short-range radio controller can be supplied with a PC interface, allowing users to control light operations from a notebook or desktop computer

## SPECIFICATIONS \* \*

### AV-ALS-RC-2.4-AVMESH

#### Electrical Characteristics

Range Up to 1.4km, AvMesh®  
Temperature Range -40 to 80°C  
Frequency (GHz) 2.4  
Nominal Voltage (V DC) 7.2

#### Power Supply

Battery Type High grade NiMH - Environmentally friendly  
Battery Capacity (Ah) 4  
Battery Voltage (V DC) 7.2

#### Physical Characteristics

Case Material Anodised aluminium  
Screen Backlit  
Product Life Expectancy Up to 12 years

#### Certifications

FCC Approved M100103  
CE EN61000-6-3:1997, EN61000-6-1:1997  
Quality Assurance ISO9001:2008

#### Intellectual Property

Trademarks AVLITE® is a registered trademark of Avlite Systems  
Warranty \* 1 year warranty

\* Specifications subject to change or variation without notice  
\* Subject to standard terms and conditions



## Available Models

- AV-70-RF
- AV-72-RF
- AV-425-RF
- EAGLE
- AV-HL-RF-SOL
- AV-FL-RF-SOL
- AV-OL-ILAB-12-R-D
- AV-OL-ILAB-UM-R-D
- AV-OL-ILAB-12-R Type 1
- AV-OL-ILAB-UM-R Type 2
- AV-WC-L
- AV-SIGN-20
- AV-SAL-01



Avlite Systems  
AUSTRALIA  
t: +61 (0)3 5977 6128

USA  
t: +1 (603) 737 1310

w: [www.avlite.com](http://www.avlite.com)  
e: [info@avlite.com](mailto:info@avlite.com)

