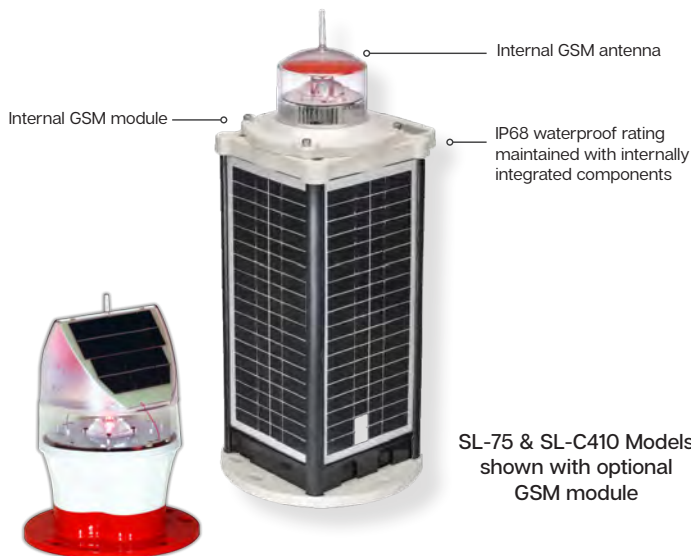


# GSM Solutions

## Monitoring & Control System



GSM module, SIM card & electronic hardware



SL-75 & SL-C410 Models shown with optional GSM module

Sealite's cost effective GSM Monitoring & Control System provides an array of options for your lantern including remote control over flash code and intensity settings, and other features for GSM-enabled lanterns.

Data is able to be communicated from the lantern including lantern statistics, battery condition and GPS positioning via your cell-phone, email address or Sealite's secure web portal.

Maintenance personnel are able to send an SMS message to the designated Sealite GSM lantern cell-phone number and then receive an automatic SMS reply detailing the various pre-set operational conditions. In addition, various alarm conditions can also be activated such as tracking a drifting buoy via GPS that has moved outside a designated area (if mooring is broken etc) or alerting to a potential power disruption.

Sealite's innovative GSM Monitoring & Control System may also be setup to regularly report lantern conditions to a secure user-login portal area of the Sealite website. This provides details of the GSM lantern's operational status in an easy-to-read PC interface, such as historical graphed data, GPS positioning viewed via internet mapping systems and day-to-day operational information about each individual lantern over the period of its service life. Users can also have alarms and reports sent to designated email addresses.

Each lantern is fitted with its own SIM card which provides a designated cell-phone contact number for each individual lantern. Any network operator can be used providing they have GSM coverage.

### Monitoring Conditions

- Battery voltage
- Solar module charging current
- Lantern current draw
- Lantern position – Latitude and Longitude (including 'off-station' facility)
- Day/night on status
- Current flash code setting
- Operation mode

### 'Off-Station' Alarm Condition

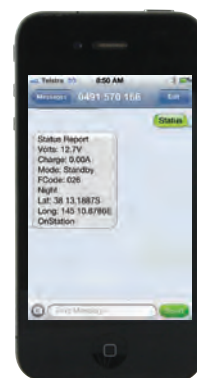
- If the AtoN moves off-station, the operator can continue to track the location of the unit for safe recovery (providing the system remains in or returns to an area with GSM coverage).

### The Sealite Advantage

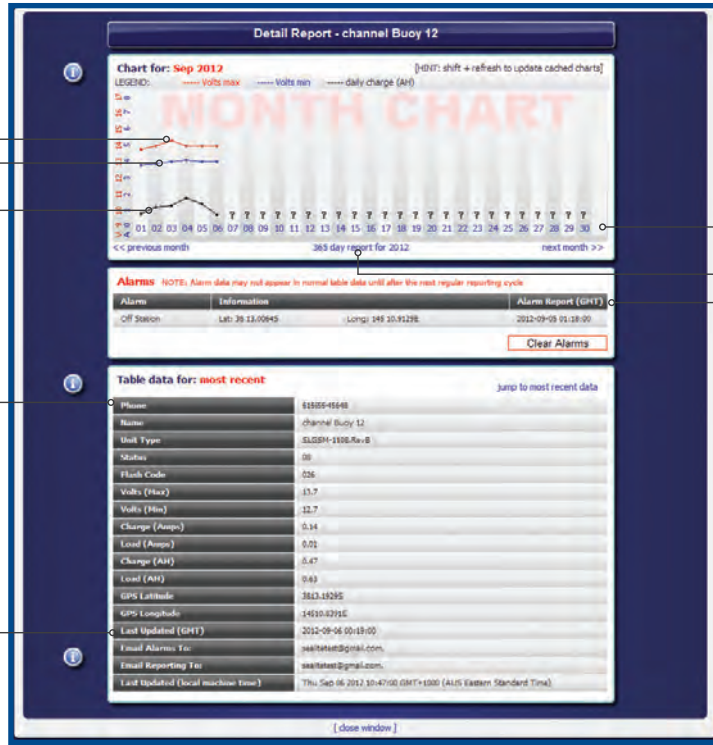
- Uses state-of-the-art high performance power LEDs
- Toughened polycarbonate lens to withstand harsh environmental conditions & vandalism
- Waterproof light head, rated IP68
- 50,000 hour rated LEDs

### Control Features

- NiMH battery for long service life & wide temperature range
- IP68 waterproof



Monitor GSM light installations via Sealite's secure website user-login portal



Shows maximum battery voltage over the last 24 hour period

Shows minimum battery voltage over the last 24 hour period

Shows total amount of solar charge added back into the battery system over the last 24 hour period (dependent on local weather conditions)

Click on a specific date to view the operational data for that day in the table below

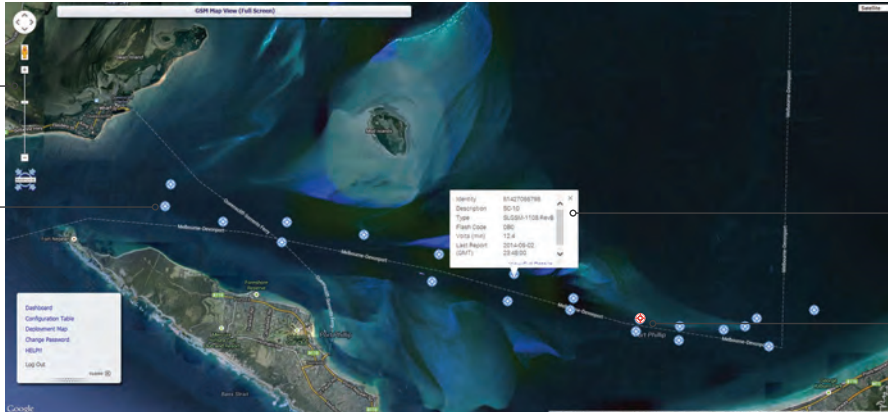
View graphed data as a yearly chart (365 day report) or monthly chart

SIM card cell-phone number (international format eg. +61488002682)

View details of alarms that have been triggered

Other table data shows operational condition of individual GSM lanterns

GPS positioning of GSM/GPS lantern viewed via internet mapping system



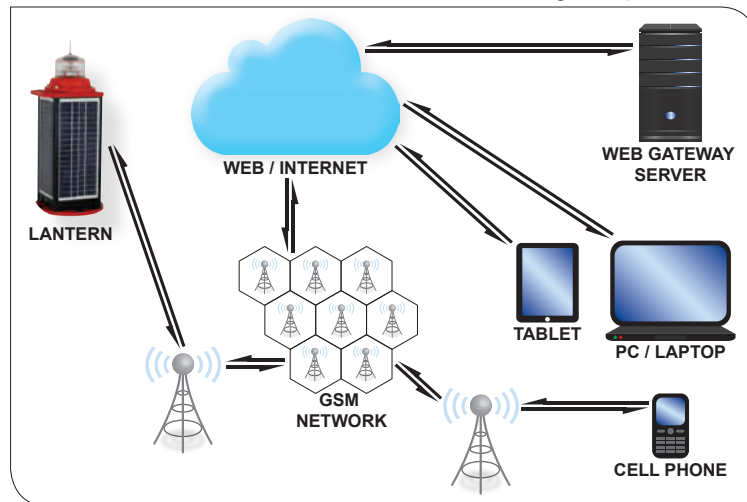
Use navigation tools to zoom in/out of internet map

Sealite logo indicates the GPS positioning of Sealite GSM/GPS lantern

Click on the Sealite logo to view summary data for that lantern

Lanterns are highlighted in red when an alarm is triggered

Interaction of GSM enabled lantern with GSM network, web gateway & user devices



\* Subject to standard terms and conditions  
 \* Specifications subject to change or variation without notice  
 \* Refer to the Sealite website under the warranty section  
 CE

We believe technology improves navigation™



Sealite Pty Ltd  
Australia  
+61 (0)3 5977 6128

Sealite Asia Pte Ltd  
Singapore  
+65 6829 2243

Sealite United Kingdom Ltd  
UK  
+44 (0) 1502 588026

Sealite USA LLC  
USA  
+1 (603) 737 1311

